

# News Bulletin / Sept 2015



Don't Miss This Live Demonstration!

## Sequential Dynamic Part Indexing

New Technology Enables 2-Axis Machining of Aspheric & Diffractive Lens Arrays



dpi Will be Shown on Our **Nanotech 450UPL<sup>v2</sup>**  
Ultra Precision Midsize Diamond Turning Lathe

## Global Service Commitment

We measure our success by that of our customers and strive to offer them the highest quality products and extraordinary service. Our rapidly growing installed base of ultra precision machining systems dictates that we continuously expand our staff of worldwide Service Engineers. Meet our newest service team members:



**Sean Murphy** - Service Engineer  
*Retired from the Air Force, Sean spent the majority of his career in the Precision Measurement Equipment Laboratory field.*



**Mark Gilbert** - Service Engineer  
*An Electro-Mechanical Engineer, Mark's degree and technical background serve him well as a new member of our service group.*



**Russell Jones** - Service Engineer - Europe  
*With extensive previous experience in ultra precision manufacturing both as a machine operator and service technician, Russell is based in the UK to help support our customers and installations in Europe.*

See us at **SPIE.OPTIFAB**  
Rochester, NY, Oct.13<sup>th</sup> - Oct.15<sup>th</sup> **Booth 600**

## Ask Nanotech . . .

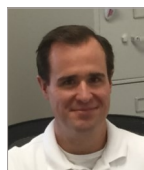
*What is one of the value added advantages of your new Touch / Swipe interactive controller?*

Users no longer have to settle for a "one screen fits all" approach to ultra precision machining. Customers are experiencing the ability to create, lock and save user customized screens with more efficient and simplified interface layouts that target specific applications. The end result is increased manufacturing efficiency, shorter lead times and reduced production costs.



## Continued Growth. . .

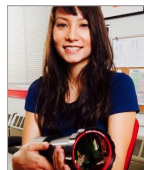
We are also pleased to welcome the following most recent additions to our expanding team of professionals:



**Paul Vermette** - Director of Engineering  
*BS in Mechanical Engineering Technology & MS in Engineering Management from Tufts Univ. Paul has held previous positions ranging from Designer to President in hi-tech companies.*



**Anny Hamshaw** - Human Resources Manager  
*MBA-HRM with concentration in HR Management, Anny brings over 10 years experience in the field.*



**Naomi Pollica** - Sales / Applications Eng. - Asia  
*BS in Applied & Interdisciplinary Mathematics, Naomi's previous experience includes Optical Design Engineering, Sales & Applications.*